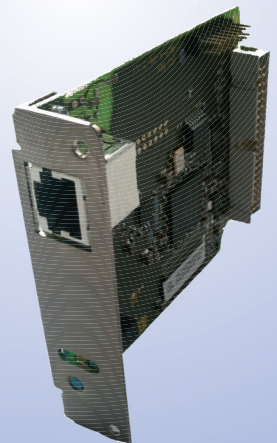




Installation Guide

7106 7206 7010
Ethernet Interface



This guide explains how to install the Ethernet LAN card in your label printer.

You should consult your dealer or distributor for more information if you are not completely sure of how to perform this operation.

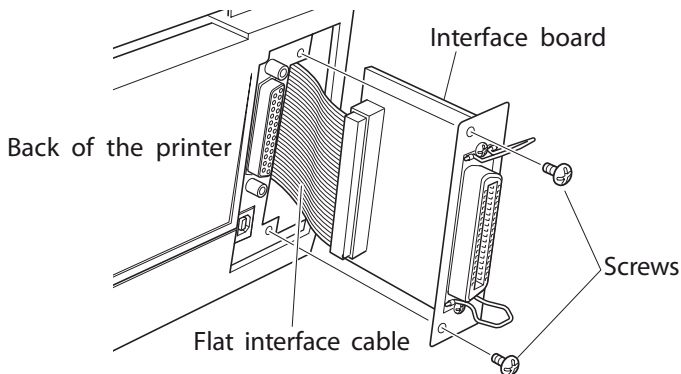


Caution

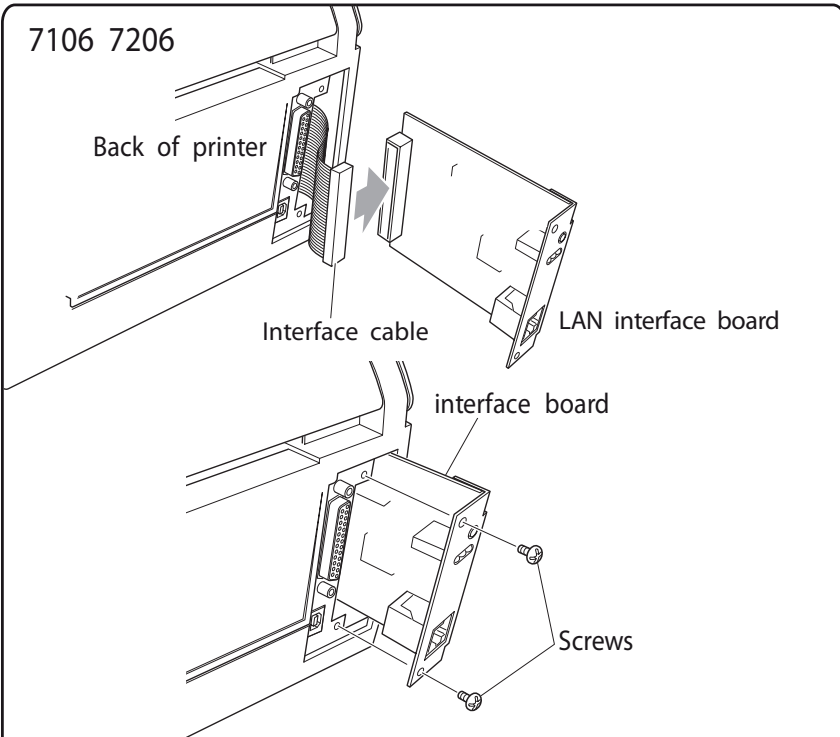
Always turn off the power to the printer and remove the power cord before replacing the interface board.

Replacing the Interface Board

1. Remove the two screws that fix the bracket of the parallel interface board to the printer. Then gently pull the interface board towards you. When you do this, be careful not catch or damage the connecting cable. Do not pull the cable too much as this could also cause damage.



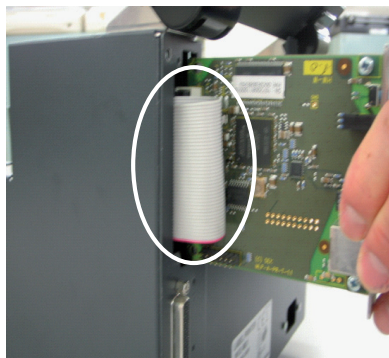
2. Remove the connecting cable from the interface board and reconnect the cable to the connector of the new interface board.
3. Insert the interface board into the printer so that the connecting cable does not catch on the printer. The new board is slightly larger than the original board, so the interface cable will need to be tucked in carefully.
4. Use the two screws that you removed to re-fix the bracket in place.



7010

Attention:

Please insert the Ethernet board by bending the cable as shown in the picture.



Testing the Interface Board

5. To test the interface board's correct operation, connect the power cord and the ethernet cable to the printer, insert some standard media, preferably 4" x 4" labels, (100mm x 100mm), then switch on the power.
6. Briefly press the blue button visible on the new interface's bracket. This will produce an "network self-test page". If you have an ethernet cable connected the "network self-test page" will show you details of any network parameters already configured.

```
Status Page PRINTSERVER
-----
General Status
Print server model      : PRINTSERVER
Serial number           : 19720090600458
Software version        : 10.2.329 (developer version)
Hardware version        : 1.0
Hardware address        : 00:c0:eb:0c:61:4f
Network                 : 100BaseTX FULL (negotiated)
Date and time           :
Service Information     : /286/29/2.4.265/85/848d.0/3cecf.0

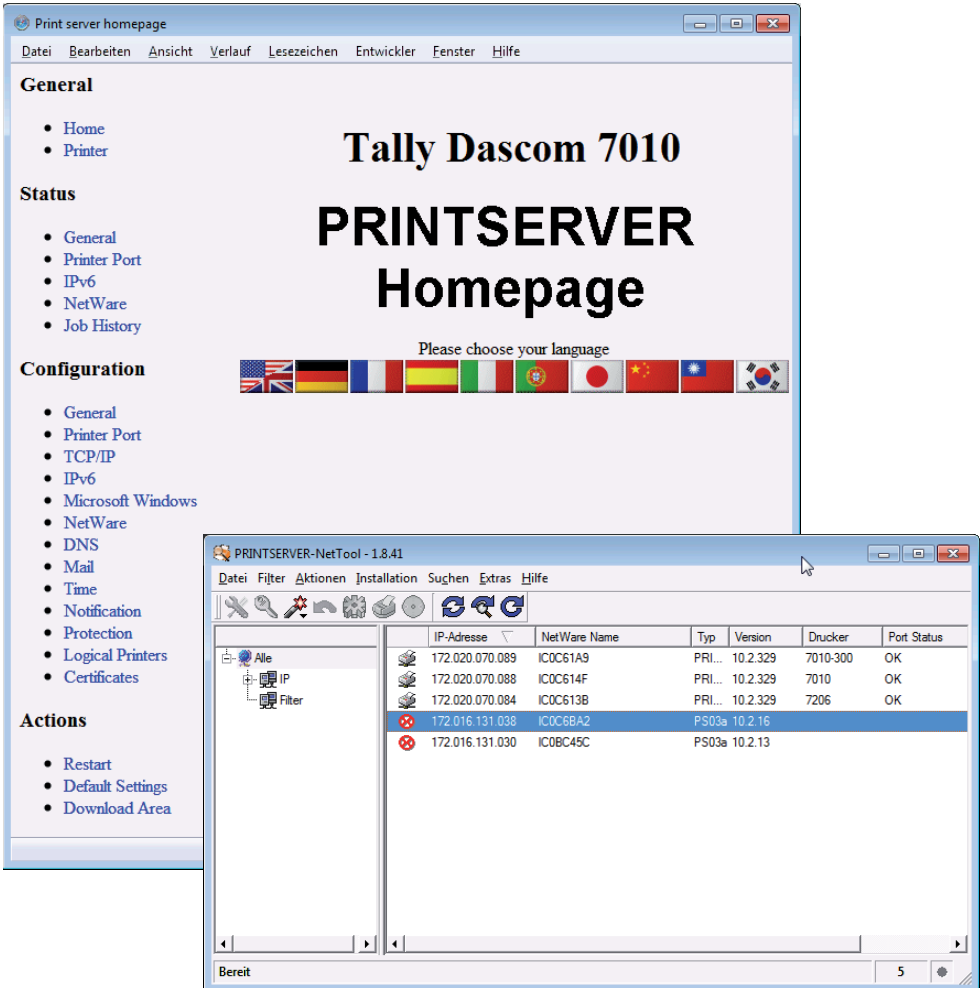
TCP/IP
IP address              : 172.020.070.088 (via HTTP)
Subnet mask             : 255.255.000.000
Gateway                 : 172.020.000.253
ARP/PING                : ON
BOOTP                  : OFF
DHCP                    : OFF
ZeroConf                : ON

IPv6
IPv6                    : ON
IPv6 addresses          : fe80::2c0:ebff:fe0c:614f

Novell
Novell name             : IC0C614F
Print server mode       : ON
R/N printer             : ON
```

Configuring the Interface using Explorer

8. To configure the network board, you can use the “PrintServer Network Tools” included on the CD supplied with the printer. However, the easiest way to configure the board is to use a Web Browser, such as Internet Explorer, running on a PC connected to the same network.



9. If you have a “DHCP Server” operating on your network (a system that ‘gives out’ network addresses to new equipment), you can easily find out the address allocated to the printer by briefly press the blue button visible on the network board’s bracket. This will generate the “network self-test page”, shown on the previous page.

10. On the self-test, under the TCP/IP section, there will be a line saying "IP address" together with four groups of digits separated by dots. It should also say "assigned by DHCP" next to it.
11. Start "Internet Explorer" or a similar web browser on a PC connected to the same network. When entering this network address, you should remove the 'leading zeros' on the address. So for example you have to type "192.168.0.65" in to the address bar.
12. To 'force' a new IP address for the printer, click on the TCPIP menu under the configuration section. Type in the new address in the 'IP address' line and adjust any other parameters. It is also very important that you untick the DHCP box, otherwise the printer will continue to take its address from the DHCP server, rather than using the new address you typed in.
For further information, please contact our local administrator.

DASCOM REPRESENTATIVES

GERMANY

DASCOM Europe GmbH
Heuweg 3
D-89079 Ulm
Deutschland
Tel.: +49 (0) 731 2075 0
Fax: +49 (0) 731 2075 100
www.dascom.com

UNITED KINGDOM

DASCOM GB Ltd
Hart House, Priestley Road
Basingstoke, Hampshire
RG24 9PU, England
Phone: +44 (0) 1256 481481
Fax: +44 (0) 1256 481400
www.dascom.com

SINGAPORE

DASCOM AP Pte Ltd
21 Bukit Batok Crescent
#29-81, WCEGA Tower
Singapore 658065
Phone: +65 6760 8833
Fax: +65 6760 1066
www.dascom.com

FRANCE

DASCOM Europe GmbH
117 Avenue Victor Hugo
92100 Boulogne-Billancourt
France
Phone: +33 (1)73 02 51 98
www.dascom.com

AMERICAS

DASCOM Americas Corporation
24 Lakeview Court
Verona, VA 24482
USA
Phone: +1 (877) 434 13 77
www.dascom.com